

My Communication

- Our focus will be 'familiar settings and information texts'
- We will be covering the book 'The Rainbow Fish' by Marcus Pfister.

My Thinking and Problem Solving

- We will be covering 'number' and 'capacity' throughout our maths sessions.
- In computing, we will be exploring creating an 'ebook'

My Creativity

- During Summer one, we will be exploring 'playing in a group' during our music sessions.

My Community

- We will continue to community visits and road safety into Spring Term.

Me and My Body

- During PE this term we will be covering Gymnastics with Chorley Sports Partnership.
- In PSHE we will be covering 'How we grow and change' and 'Public and Private'

The World About Me

- In Science we will be covering The Life Cycle of plants and animals.
- In Food Technology we will be making some 'Fish and Chip Shop favourites'



Important Dates

- Swimming will be on Monday morning.
- PE will be on a Tuesday Morning.

Community Visits

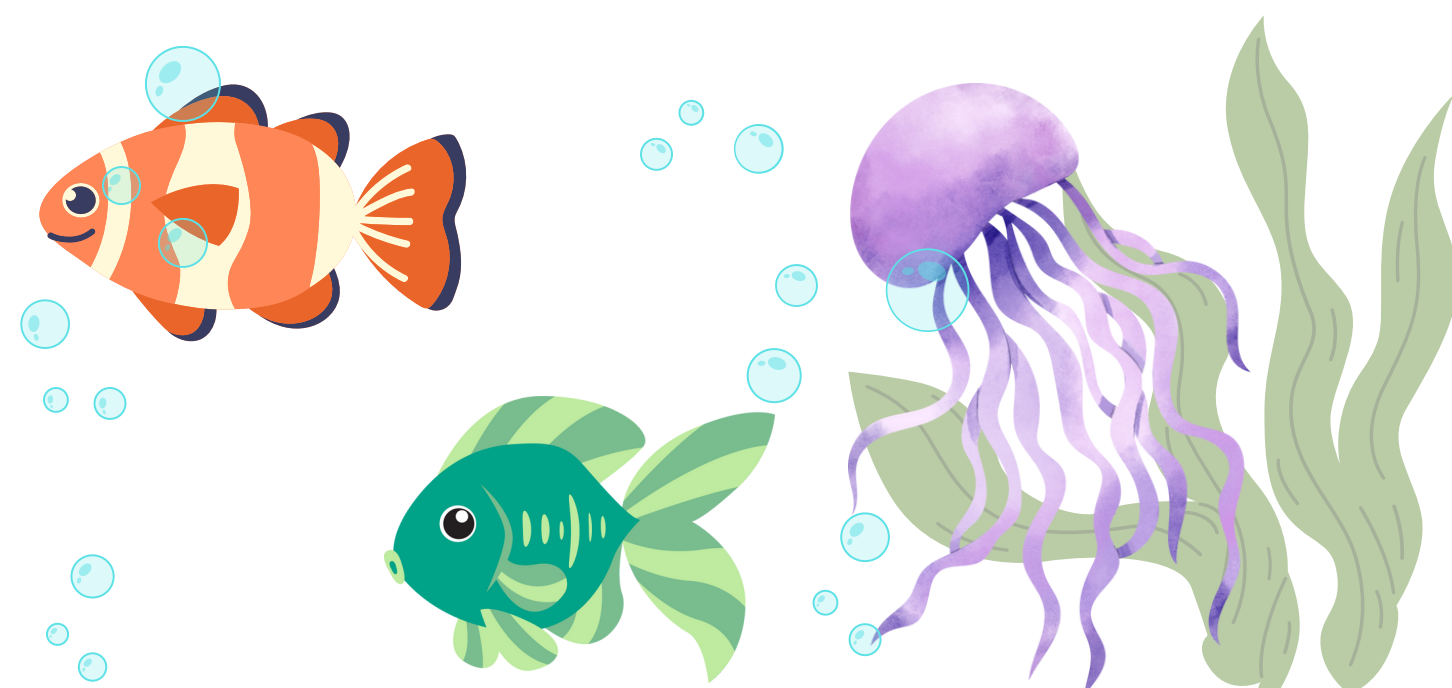
- Wednesday mornings your learner will either go to, The Supermarket, Astley Park or the Library.

Phase Trips

- During Summer One, we will be going to Blackpool Sealife Centre - a confirmed date is yet to come.

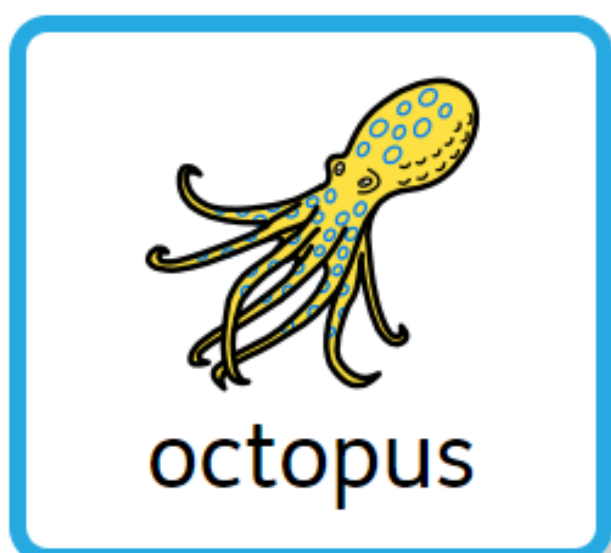
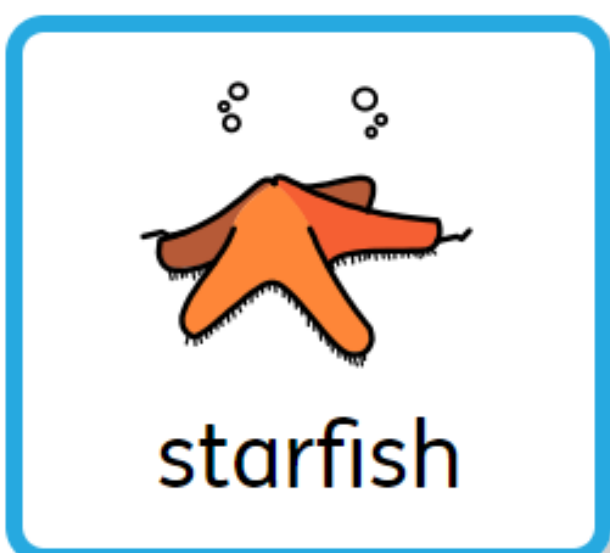
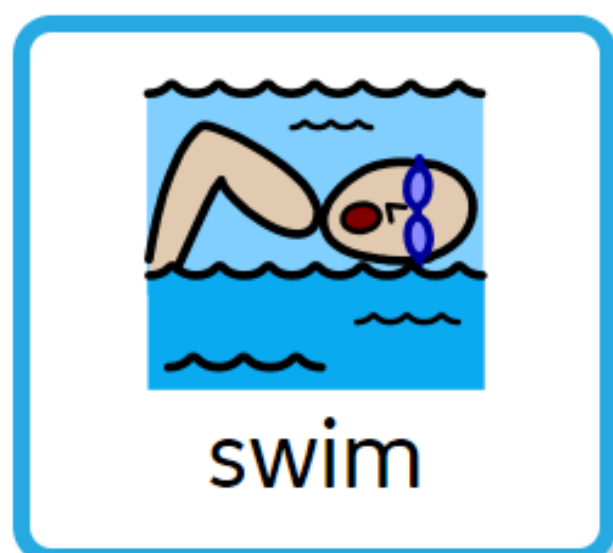
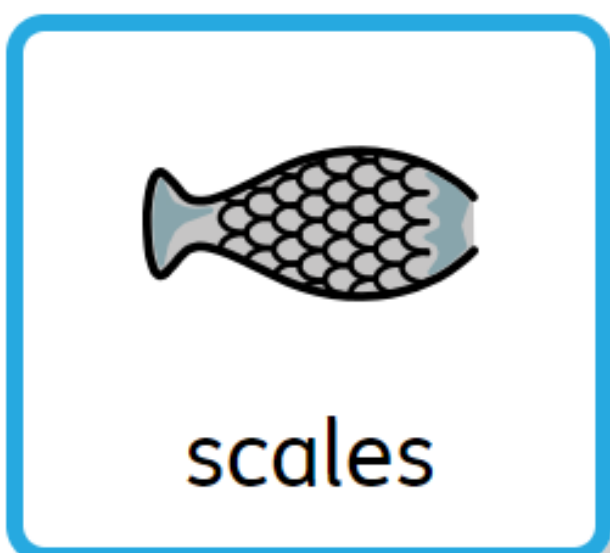
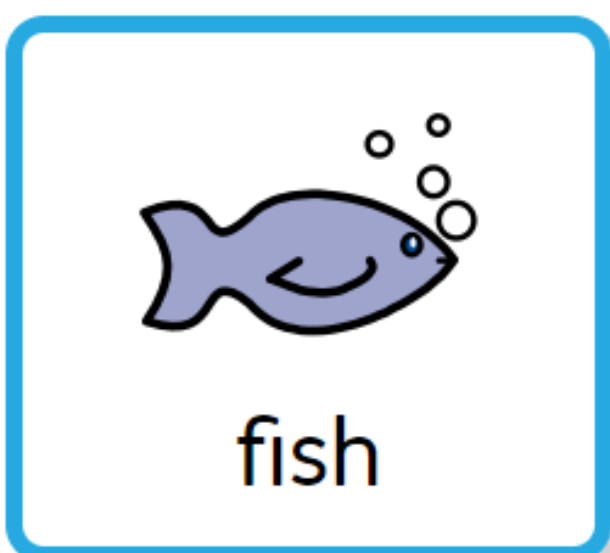
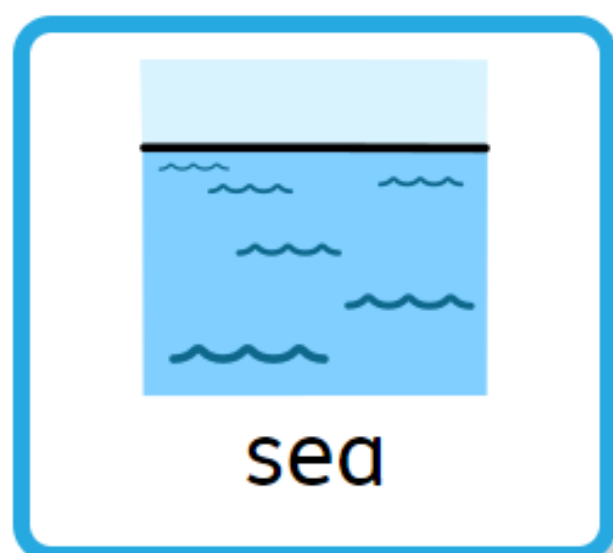
Weather

- With the weather getting warmer, please can you send your learner in with... labelled hats, labelled/in date suncream, labelled/identifiable water bottles and anything else to protect them from the weather.



The Rainbow Fish

Communication mat



Summer One Topic Signs

